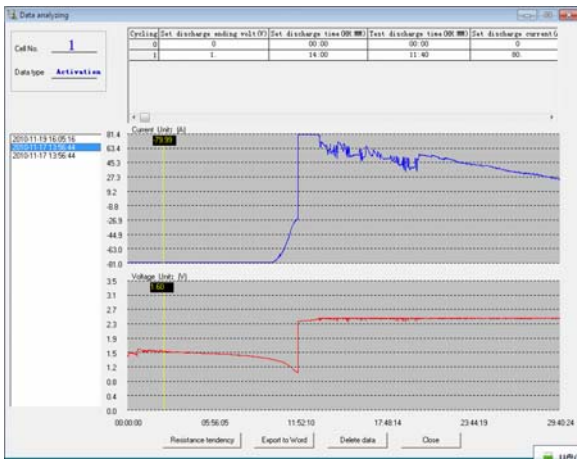


PWR3930 Battery Charger/Discharger

It is a compact unit for daily maintenance of single cell, especially for old cells. It plays three roles for complete solutions: charger, discharger and activator, which will facilitate your maintenance for batteries. The three functions could be used individually or comprehensively. When used comprehensively, lag-out battery will experience low-volt constant current charging and discharging singly or in multi-circles (1~99). By activating the disabled Active-Material on battery electrode plate, it amends the battery malfunction caused by chemical failure and thus boosts the capacity of old battery. Battery activation is very significant for resources utilization and efficiency increasing.



Features

- ◆ Small size, portable and user-oriented
- ◆ Applicable to single cell of 2V, 6V and 12V
- ◆ 3 functions in one: charging, discharging and activation
- ◆ These functions could be used separately or comprehensively
- ◆ Testing waveform playback function
- ◆ All-rounded and accurate testing results with vivid waveforms
- ◆ Could charge/discharge battery singly and circularly for many times
- ◆ Long-time monitoring of the battery condition

- ◆ Safety circuits prevent damage to battery
- ◆ Direct USB drive for data transferring to PC
- ◆ Powerful PWR DataView software for testing data analyzing and report printing
- ◆ Simple and fast for software update
- ◆ Meaningful for resources utilization and efficiency increasing

Technical Parameters

Parameters	Measure Mode	Resolution	Accuracy
Charging current	1-100A (cell:2V)	1A	1%
	1-30A (cell:12V)		
	1-30A(cell:6V)		
Discharge current	1-100A(cell:2V)	1A	1%
	1-30A(cell:12V)		
	1-30A(cell:6V)		
Total charge voltage	1.7-2.4V (2V)	0.1V	0.25%
	5.4-7.2V (6V)		
	10.2-15V (12V)		
Total discharge voltage	1.7-2.4V(2V)	0.1V	0.25%
	5.4-7.2V(6V)		
	10.2-15V(12V)		

Specification

- ◆ Power supply: AC220V/110V
- ◆ LCD display: 128*64 pixels
- ◆ Com port: USB
- ◆ Temperature: 5°C ~ 50°C
- ◆ Humidity: 5% ~ 90%RH
- ◆ Dimension: 395*370*200 mm
- ◆ Weight: 10Kg (main unit)
- ◆ Safety: CE marking
EMC standard

POWER ELEKTRONİK SANAYİ VE TİCARET ANONİM ŞİRKETİ
Armağanevler Mah. Samanyolu cad.İpekçi Sokak No: 12 34760 Ümraniye/
İstanbul/Turkey
Tel: 00 90 0216 481 66 99 Fax: 00 90 0216 481 66 09