



www.powersolar.com.tr

MOBILE GREEN ENERGY



XSERIES. PHOTOVOLTAIC GENERATORS

The **X Series** solar power generators are designed to supply clean energy installing the PV modules on a roof or on a ground structure, while the **Power X Series** box can be located either indoor or outdoor. The main feature of the X Series is **power**. The biggest model of the X Series hosts 8 KW inverter power and 21,6 KWh energy storage within a total volume less than 1 cubic meter. The X Series generators **maximise** the **power/price** ratio. Having the possibility of a **parallel connection** between more units, a wide range of optional features and the possibility to set different logics of operation, the X Series models can be **highly customized**.

X200

X300

X400

X600

PV POWER (Wp)	2250	3000	4500	6000
NUMBER OF PV MODULES	9 x 250 Wp	12x 250Wp	18x 250Wp	24 x 250Wp
INVERTER POWER (W)	3200	4000	6400	8000
BATTERIES (N - V - Ah)	8 - 6 - 225 (AGM)	8 - 6 - 225 (AGM)	8 - 6 - 225 (AGM)	16 - 6 - 225 (AGM)
BATTERY CAPACITY (Wh)	10800	10800	10800	21600
CASE DIMENSIONS (cm)/(Kg)	91x91x101/380	91x91x101/380	91x91x101/400	91x91x101/690
TOTAL WEIGHT (Kg)	620	680	820	1230

OPTIONAL

- 21,6 KWh enhanced battery
 - 9,6 KWh OPzV battery pack
 - up to 6 parallel units
 - 3phase output with 3 or 6 units
 - PV string combiner box
- 21,6 KWh enhanced battery
 - 9,6 KWh OPzV battery pack
 - up to 6 parallel units
 - 3phase output with 3 or 6 units
 - PV string combiner box
- 21,6 KWh enhanced battery
 - 9,6 KWh OPzV battery pack
 - up to 3 parallel units
 - 3phase output with 3 units
 - PV string combiner box
- up to 3 parallel units
 - 3phase output with 3 units
 - PV string combiner box

Technical characteristics described in this data sheet are for information only. They are not contractual and may change without prior notice.

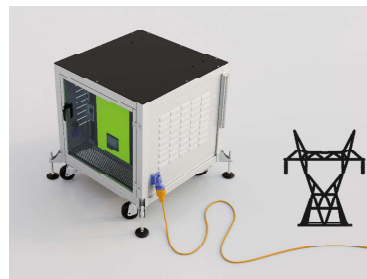
THE XSeries GENERATORS ARE KITs READY TO USE. You only have to connect the PV modules!



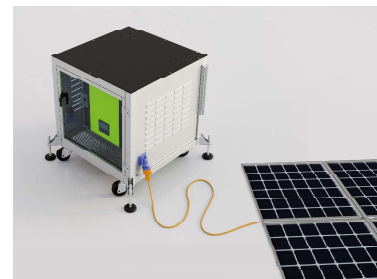
COMPACT SIZE



MODULAR BATTERY PACK



AUXILIARY POWER



PV MODULES CONNECTION



BATTERY AUTONOMY

The following chart gives a clear indication of how many working hours are remaining, depending on the power load connected to the Power in the total absence of sunlight.

POWER (W)	X200 HOURS	X300 HOURS	X400 HOURS	X600 HOURS
100	165,0	165,0	165,0	390,0
500	22,5	22,5	22,5	53,0
1000	9,5	9,5	9,5	22,5
3000	2,4	2,4	2,4	5,8
4000	-	1,7	1,7	4,1
6000	-	-	1,0	2,5
8000	-	-	-	1,7



DAILY PRODUCTION (kWh/day)

		ROME	JO'BURG	MEXICO CITY	SYDNEY
X200	JANUARY	3,65	10,23	9,60	9,25
	JULY	10,37	6,64	9,66	6,47
	AVG (year)	7,03	8,72	9,96	8,10
X300	JANUARY	5,47	15,35	14,40	13,88
	JULY	15,55	9,96	14,49	9,71
	AVG (year)	10,54	13,08	14,95	12,15
X400	JANUARY	7,30	20,47	19,20	18,51
	JULY	20,74	13,29	19,32	12,94
	AVG (year)	14,05	17,43	19,93	16,20
X600	JANUARY	10,94	30,70	28,80	27,76
	JULY	31,10	19,93	28,97	19,41
	AVG (year)	21,08	26,15	29,89	24,31